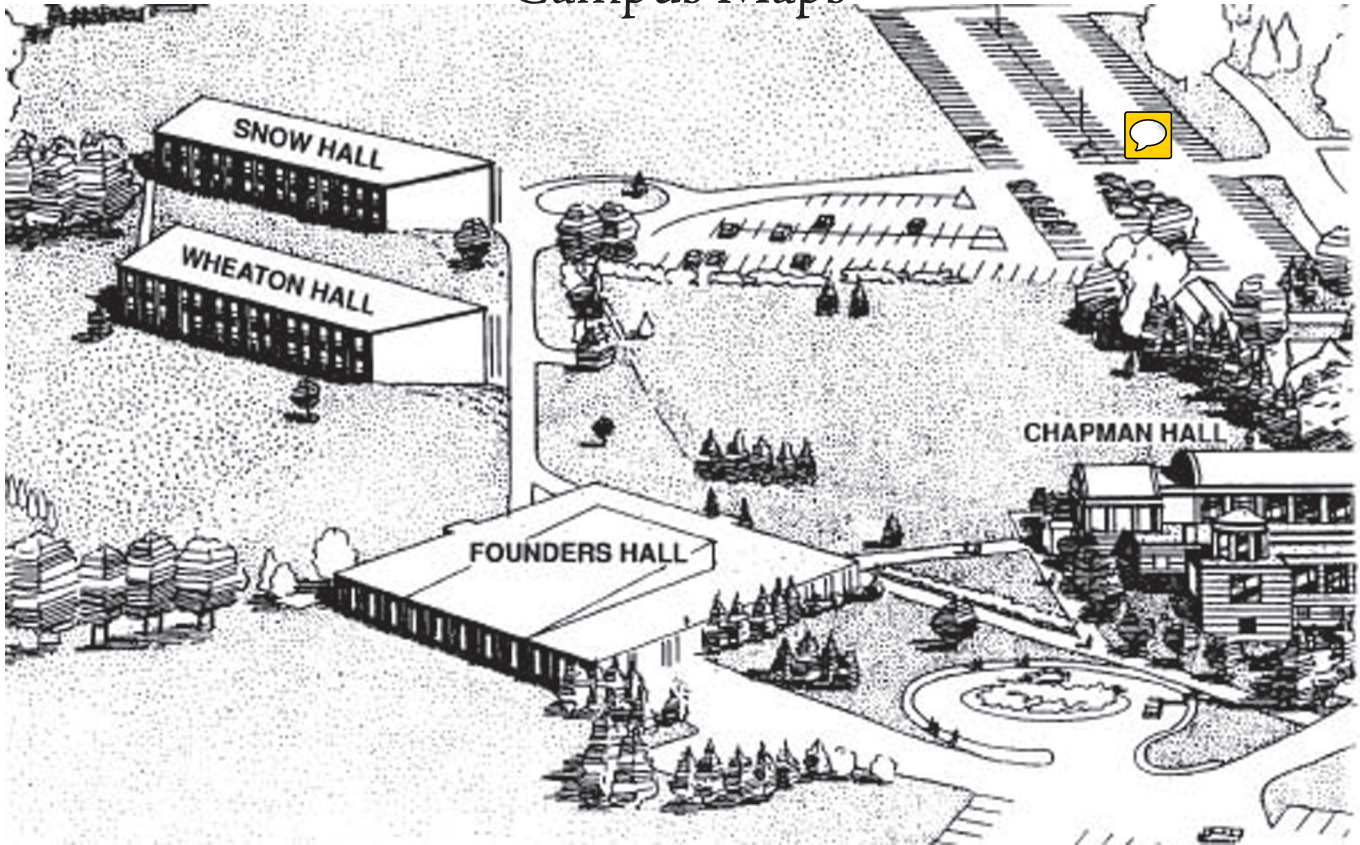


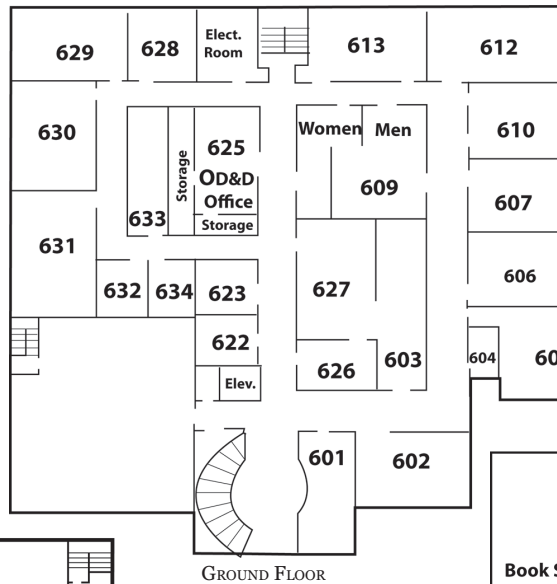
Middlesex Community College Campus Maps



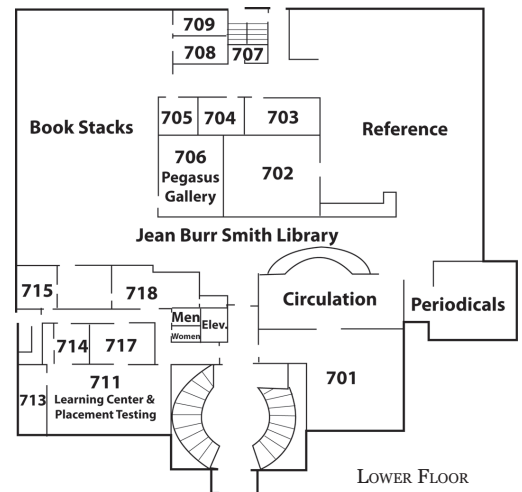
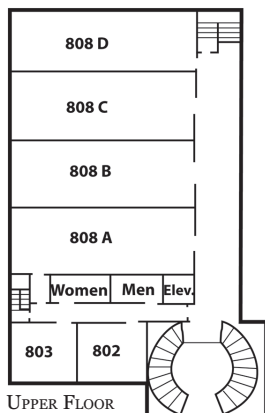
CHAPMAN HALL

- 601 Storage
- 602 Mechanical Room
- 603 OD&D Workshop
- 604 Storage
- 605 Classroom
- 606 Classroom
- 607 Classroom
- 609 Contact Lens Clinic
- 610 Classroom
- 612 Classroom
- 613 Classroom
- 622 Utility Room
- 623 Mechanical Room
- 625 OD&D Faculty Office
- 626 Dispensing Lab.
- 627 OD&D Lab
- 628 Conference Room
- 629 Digital Classroom
- 630 Classroom
- 631 Classroom
- 632 Office
- 633 Distance Learning & Instructional Technology
- 634 Office

- 802 Classroom
- 803 Classroom
- 808A Multipurpose Room A
- 808B Multipurpose Room B
- 808C Multipurpose Room C
- 808D Multipurpose Room D

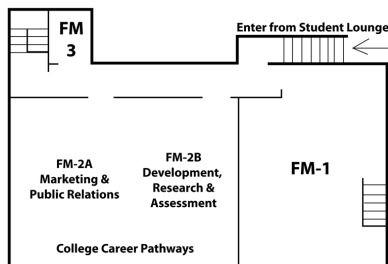
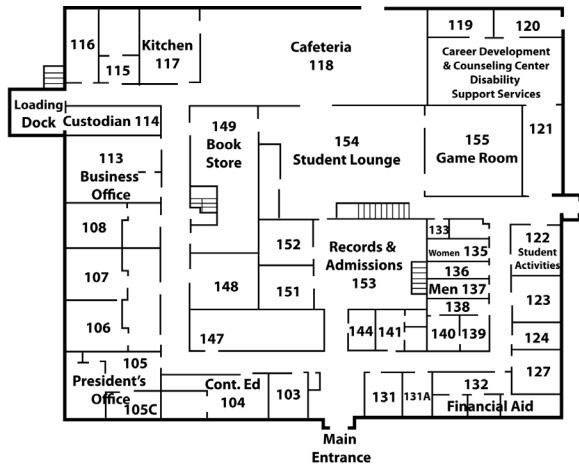


- 701 Circulation / Cataloging
- 702 Microforms Room
- 703 Computing Room
- 704 Typing Room
- 705 Study Room
- 706 Pegasus Gallery
- 707 Art Slide Viewing Room
- 708 TV Viewing Room
- 709 Listening Room
- 711 Learning Center & Placement Testing
- 713 Office
- 714
- 715-717 Reading/Writing Lab
- 718



FOUNDERS HALL

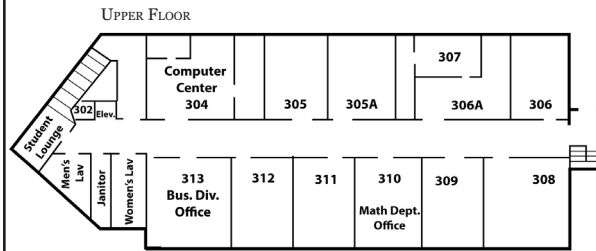
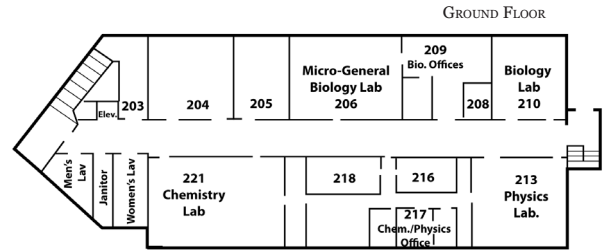
- 103 Conference Room
- 104 Continuing Education
- 105 President
- 105C Exec. Assistant to President
- 106 Dean of Administration, Finance & Planning
- 107 Dean of Learning & Student Development
- 108 Associate Dean of Learning & Student Development
- 113 Business Office
- 114 Loading Dock / Custodian
- 115 Human Resources
- 116 Payroll Office
- 117 Kitchen
- 118 Cafeteria
- 119-121 Career Dev. & Counseling Center Disability Support Services
- 122 Student Activities
- 123 Student Activities
- 124 Foundation Office
- 127 Academic Support Services & Minority Affairs
- 131 CBIS / Allied Health
- 131A Institutional Advancement / Grant Writer
- 132 Financial Aid
- 133 Pump Room
- 135 Women's Lav.
- 136 Janitor
- 137 Men's Lav
- 138 Business Office Storage / Stock Room
- 139 Staff - Women's
- 140 Staff - Men's
- 141 Associate Director of Admissions
- 144 Mechanical Room
- 147 Information / Communication Center
- 148 Building Maintenance Supervisor
- 149 Bookstore
- 151 Admissions Director
- 152 Registrar
- 153 Admissions and Records
- 154 Student Lounge
- 155 Game Room



- FM-1 Records Office Storage
- FM-2A Marketing & Public Relations
- FM-2B Development, Research & Assessment College Career Pathways
- FM-3 Staff Lounge

WHEATON HALL

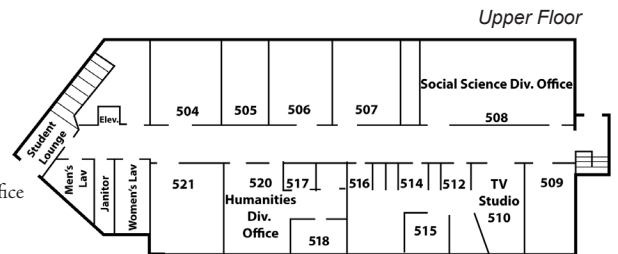
- 203 Mechanical Room
- 204 Classroom
- 205 Classroom
- 206 Microbiology Lab
- 208 Conference Room
- 209 Biology Office
- 210 Biology Lab
- 213 Physics Lab
- 214 Physics Prep.
- 216 Instrumentation Lab
- 217 Chemistry/Physics Office
- 218 Chemistry Storage
- 220 Chemistry Prep.
- 221 Chemistry Lab
- 223 Women's Lav.
- 224 Janitor
- 226 Men's Lav.



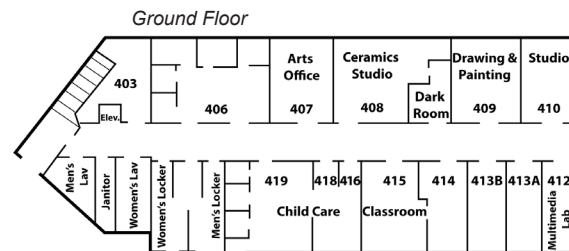
- 304 Information Technology Department
- 305 Open Computer Lab
- 305A Computer Classroom
- 306 Computer Classroom
- 306A Media Services
- 307 Business Office Technology
- 308 Computer Classroom
- 309 Classroom
- 310 Math Dept. Office
- 311 Classroom
- 312 Classroom
- 313 Business Division Office
- 315 Women's Lav.
- 316 Janitor
- 318 Men's Lav.

SNOW HALL

- 502 Storage
- 503 Student Lounge
- 504 Classroom
- 505 Classroom
- 506 Classroom
- 507 Classroom
- 508 Social Science Div. Office
- 509 Classroom
- 510 TV Studio
- 512 TV Studio Control Room
- 514 Broadcast Communications Productions
- 515 Broadcast Communications Office



- 516 WMXC Student Radio Station
- 517 Conference Room
- 518 Foreign Language Office
- 520 Humanities Division Office
- 521 Classroom
- 525 Women's Lav.
- 526 Janitor
- 528 Men's Lav.



- 421 Men's Locker Room
- 426 Hot Water Heater
- 427 Women's Locker Room
- 430 Women's Lav.
- 431 Janitor
- 433 Men's Lav.

- 403 Mechanical Room
- 406 Classroom
- 407 Art Office
- 408 Sculpture Studio/ Dark Room
- 409 Drawing & Painting Studio
- 410 Studio
- 412 Multimedia Lab
- 413 Classroom
- 414 Adjunct Faculty Office
- 415 Classroom
- 416 Child Care
- 418 Director, Child Care Service
- 419 Child Care